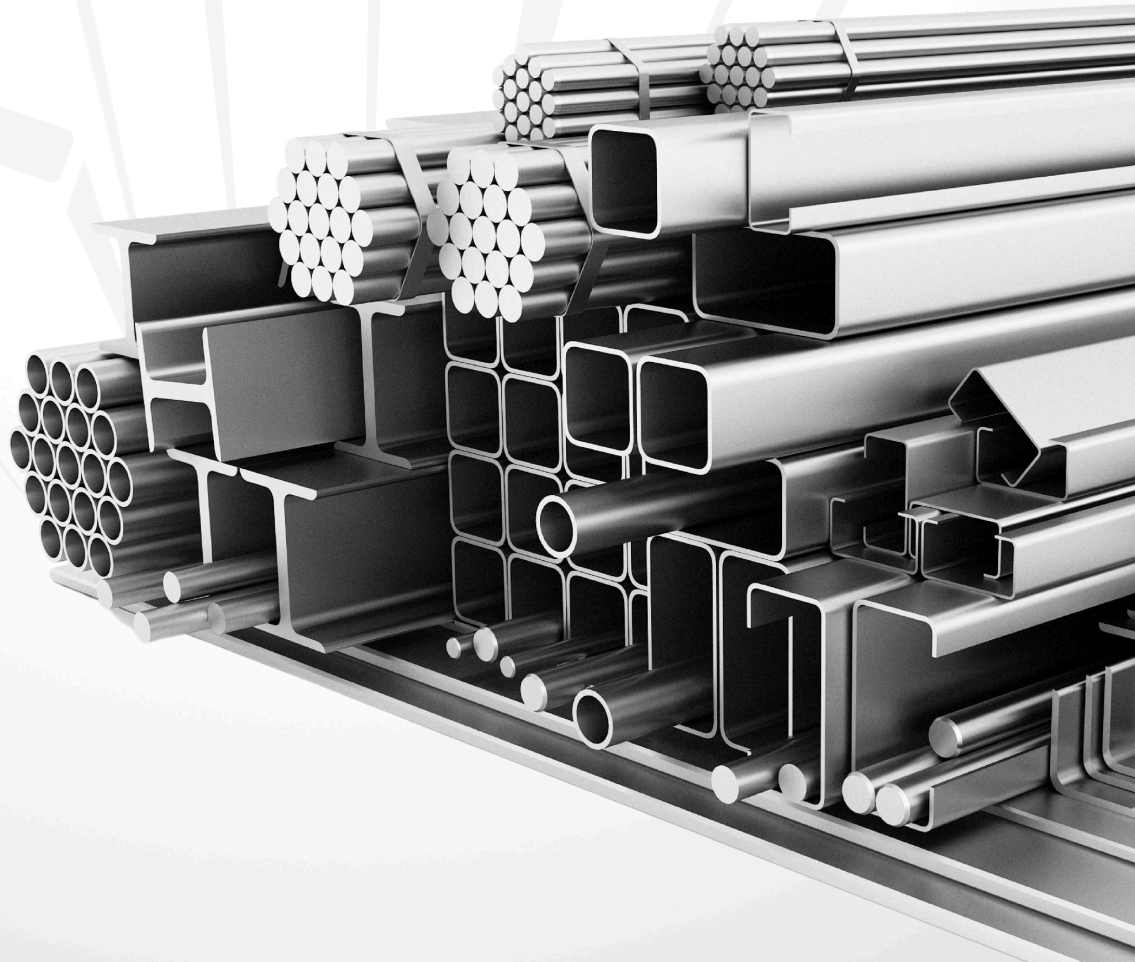




# حديد العبو ALABUO STEEL

إختيارك الأول للحديد الصناعي والبناء  
Your First Choice for Industrial Steel and Construction



Our Location



هدفنا الأساسي هو أن نكون دولة نموذجية ورائدة في جميع المجالات، وسأعمل معكم لتحقيق هذا المسعى

الملك سلمان بن عبدالعزيز

MY PRIMARY GOAL IS TO BE AN EXEMPLARY AND LEADING NATION IN ALL ASPECTS, AND I WILL WORK WITH YOU IN ACHIEVING THIS ENDEAVOUR

King Salman bin Abdulaziz



يسرني أن أقدم لكم رؤية المملكة العربية السعودية للمستقبل. إنها خطة طموحة وقابلة للتحقيق، تعبر عن أهدافنا وتطلعاتنا طويلة المدى، وتعكس مكان القوة والقدرات في بلادنا. تبدأ كل قصة نجاح برؤية، وتقوم الرؤية الناجحة على ركائز قوية.

الأمير محمد بن سلمان

IT IS MY PLEASURE TO PRESENT SAUDI ARABIA'S VISION FOR THE FUTURE. IT IS AN AMBITIOUS YET ACHIEVABLE BLUEPRINT, WHICH EXPRESSES OUR LONG-TERM GOALS AND EXPECTATIONS AND REFLECTS OUR COUNTRY'S STRENGTHS AND CAPABILITIES. ALL SUCCESS STORIES START WITH A VISION, AND SUCCESSFUL VISIONS ARE BASED ON STRONG PILLARS.

Prince Muhammad bin Salman





Alabuo Trading Company is a leading supplier of high-quality steel products, catering to a diverse range of industries worldwide. With a strong focus on reliability, customer satisfaction, and innovative solutions, we have established ourselves as a trusted partner in the steel trading industry. Our extensive product portfolio, coupled with a dedicated team of professionals, ensures that we meet the unique needs of each client with precision and excellence.

## Our code

### Integrity:

We conduct our business with honesty and transparency, building trust with our clients and partners through every transaction.

1

### Quality:

We supply only top-grade steel products, ensuring consistent reliability and performance for our customers' projects.

2

### Customer Focus:

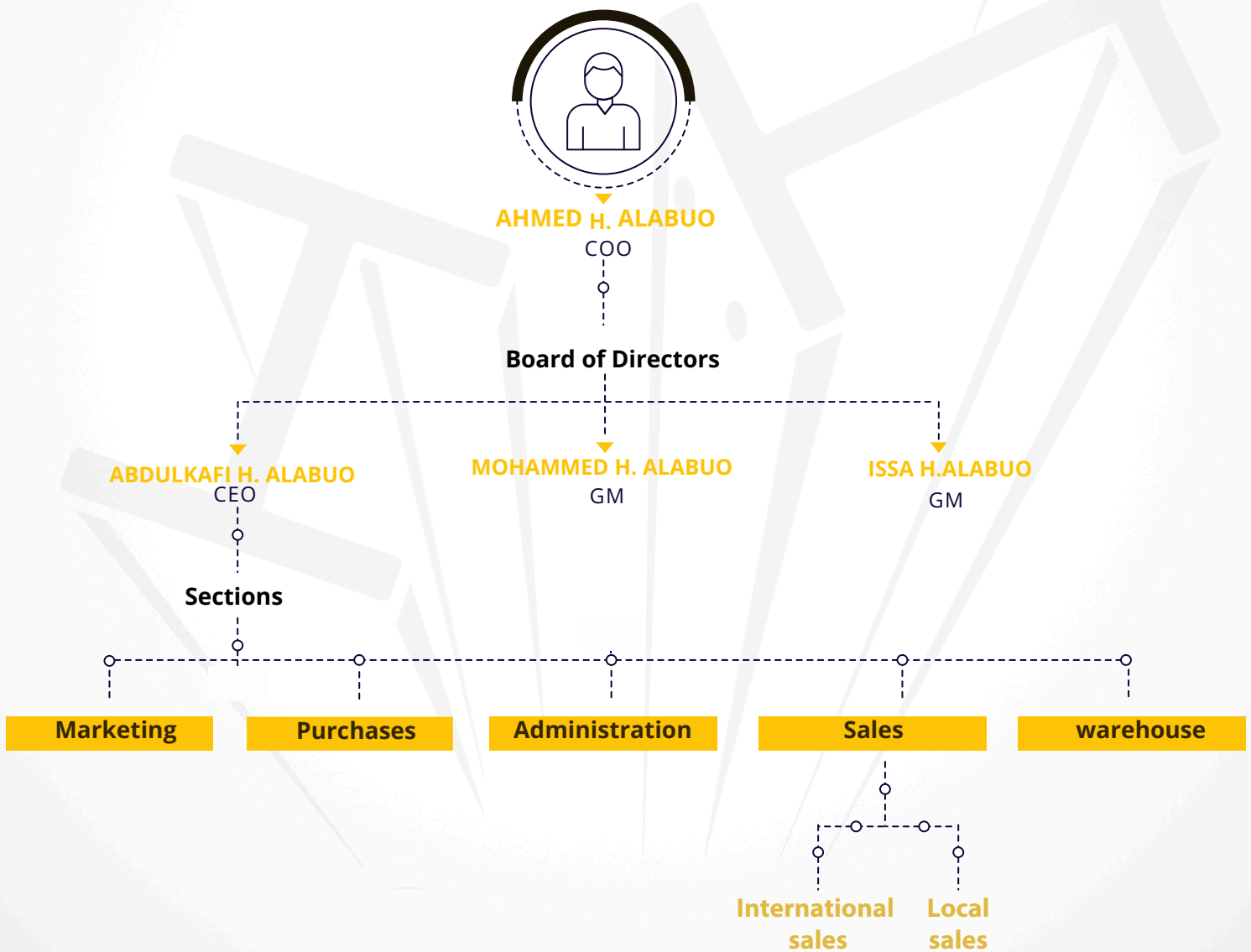
We prioritize our customers' needs, providing personalized service and tailored solutions to help them succeed.

3

### Innovation:

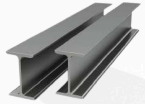
We stay ahead of industry trends, continuously improving our offerings and processes to deliver cutting-edge solutions.

4

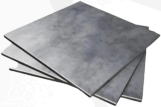




PIPES & TUBES----- 6



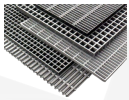
LONG PRODUCTS----- 7



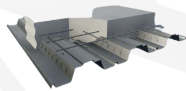
FLAT PRODUCTS----- 8



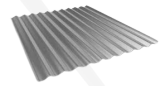
GI, PPGI & STAINLESS STEEL----- 9



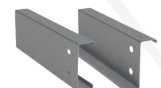
STEEL GRATING----- 10



METAL DECKING----- 11



CORRUGATED SHEET----- 12



Z&C CHANEL----- 13



BENDING MATERIALS----- 14



LASER CUT MATERIELS ----- 15



BUILDING ACCESORIES----- 16-17



PER FORATED METAL SHEET ----- 18-19



SHOT BLASTING----- 20



## Black & Hot Dipped Galvanized Steel Pipes

Type	Black & Hot Dipped Galvanized Steel Pipes
Size range	1/2" to 24"
Standard	EN10225 : 2004, ASTM A53 Gr. A SCH 40, ASTM A53 Gr. B SCH 40

## Seamless Pipes

Type	Mild Steel Pipes
Size range	range 1/2" to 12"
Standard	ASTM A106/ ASTM A53 Gr. B SCH 40

## MS Square Hollow Sections

Type	Cold Formed Welded Square Tubes range 19 mm x 19 mm to 400 mm x 400 mm
Size	S235 JRH/ S275 JOH/ S275 J2H/ S355 JOH/ S335 J2H
Standard	

## MS Rectangular Hollow Sections

Type	Cold Formed Welded Square Tubes
Size	range 40 mm x 20 mm to 500 mm x 300 mm
Standard	S235 JRH/ S275 JOH/ S275 J2H/ S355 JOH/ S335 J2H



## Beams

Type : Universal Beams (UB)  
Size range : 127x76x13 To 1016x305x487  
Material : S275JR S355JR, S235jr, S235jo  
Standard : BS EN 10025

Type : Universal Columns (UC)  
Size range : 152x152x23 To 356x406x634  
Material : S275JR S355JR, S235jr, S235jo  
Standard : BS EN 10025

Type : American Wide Flange Beams  
Size range : 4 x 4 To 44 x 16  
Material : ASTM A992 ,ASTM A572 GR50 , ASTM A36  
Standard : AISC, ASTM

Type : JIS Wide Flange Beams (JIS)  
Size range : H-section 100x100 To 900x300 I-section 100x50 To 600x200  
Material : SS400 ,SS540, S275JR, S355JR  
Standard : JIS G 3101 , JIS G 3192

Type : European Beams  
Size range :  
H-section HE AA 100 To HE B 900  
I-section IPE AA 100 To IPE 750  
Material : S275JR S355JR, S235jr, S235jo  
Standard : EN 10365 , BS EN 10025

## Channels

Type : JIS  
Size range : 50 mm x 25 mm to 380 mm x 100 mm  
Standard : EN10025 - S275 JR/S355 JR/ S355 JO/ SS400  
Type : UPN  
Size range : 50 mm to 400 mm  
Standard : EN10025 - S275 JR/S355 JR/ S355 JO/ SS400  
Type : PFC  
Size range : 100 mm x 50 mm to 430 mm x 100 mm  
Standard : EN10025 - S275 JR/S355 JR/ S355 JO/ SS400

## MS Angles

Type : Equal  
Size range : 20 mm x 20 mm to 200 mm x 200 mm  
Standard : EN10025 - S275 JR/S355 JR/ S355 JO/ SS400  
Type : Unequal  
Size range : 75 mm x 50 mm to 200 mm x 100 mm  
Standard : EN10025 - S275 JR/S355 JR/ S355 JO/ SS400

## MS Bars

Type : Round Bars  
Size range : 6 mm to 100 mm  
Type : Shafting/ Bright Bars  
Size range : 6 mm to 200 mm  
Type : Square Bar  
Size range : 10 mm to 60 mm  
Standard : ASTM A36/ SS400/ S275 JR/ S355 JR



## HR Sheets/ Coils & Chequered Sheets

Type	Sheets
Thickness	2.7 mm to 12 mm
Width	1219 mm x 2438 mm/ 1500 mm x 6000 mm
Type	Coils
Thickness	1.0 mm to 12 mm ,
Width	1219 mm/ 1500 mm/ 2000 mm Chequered
Type	Sheets 1.8 mm to 12 mm
Thickness	1219 mm x 2438 mm/ 1500 mm x 6000 mm
Width	S235/ S275/ ASTM A36/ SS400
Grade	

## Aluminum Sheets/ Coils

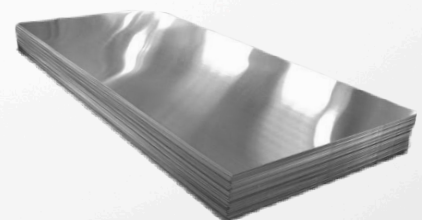
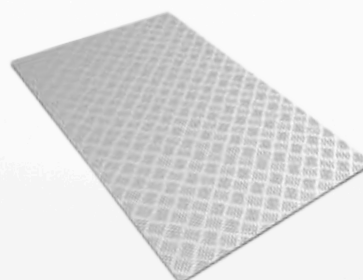
Type	Plain Sheets
Thickness	0.4 mm to 10 mm
Width	1219 mm x 2438 mm
Alloy	AA1100/ AA1200/ AA3003/ AA5005
Type	Coils
Thickness	0.5 mm to 3 mm
Width	1219 mm/ 1500mm
Alloy	AA1100/ AA1200/ AA3003
Type	Chequered Sheets
Thickness	1.8 mm - 10 mm
Width	1219 mm x 2438 mm
Alloy	AA1100

## Hot Rolled Steel Plates

Type	Hot Rolled
Thickness	Steel Plates
Width	4 mm to 60 mm
Length	2 M/ 2.5 M/ 3.05 M
Standard	6 M/ 12 M
Commercial	

## Offshore

Boiler/ Pressure	ASTM A36/ S275 JR/ S355 JR/ S355 J0
Vessel	S355J2/ S355K2/ AP12H50
Shipbuilding	ASTM/ ASME 60/ 65/ 70 (Normalized/ NAC)
Grade	ABS : A/ B/ C/ AH32/ AH36/ EH36





## Galvanized Coils & Sheets

Type	Regular/ Zero Spangle
Thickness	0.28 mm to 4.0 mm
Width	1219 mm/ 1500 mm
Coating	Z120/ Z180/ Z275
Grade	ASTM A-653

## Prepainted Galvanized Iron (PPGI) Coil

Type	Prepainted Steel Coil/ Sheet
Thickness	0.12 mm to 2.00 mm
Width	350 - 1250 mm 610/ 508 Hot - Dip Zinc Coated
Coil ID	EN10142/ EN10147/ EN10292/ JIS G3302/ ASTM A653
Type of Base Metal	DX51D+Z, DX52D+Z, DX53D+Z/ S280GD+Z, S350D+Z, S550GD+Z/ SGCC, SGCD, SGC340/ CS Type C, CS
Standard	Type A, CS Type
Steel Grade	B, FS Type A/ FS Type B, SS275, SS550, SS340 class 1
Colors	RAL, RAL 9002, RAL 1001

## Stainless Steel

Type	Coils & Sheets 0.30 - 50 mm
Thickness	1219/ 1250/ 1500/ 2000 mm
Width Coil	508/ 610 304/ 316L/ 304L/
ID Grade	430/ 310S
Finishes	Hot Rolled No. 1 finish, 2B finish, Brush finish, Hairline finish, Mirror finish.



## Possibilities

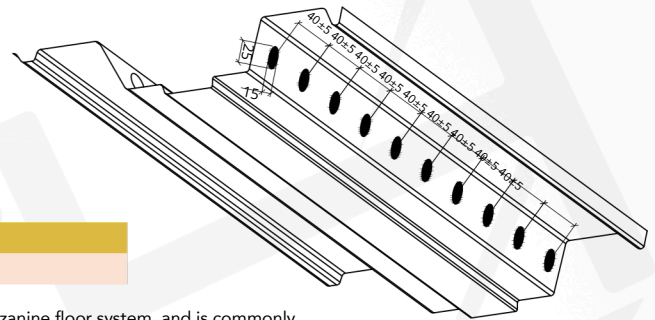
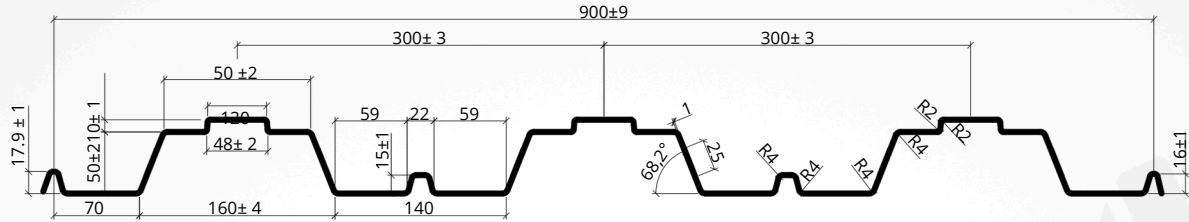
### How to choose and specify our gratings

Our gratings and stairtreads can be produced with any combination of the options given below. To correctly specify the type of gratings that you need, please choose one option from each section. Your selection should also consider the performance load tables shown on pages 15, 17, 19 and 21.

- 1 Bearing Bar Height (mm) -20, 25, 30, 32, 35, 38, 40, 45, 50, 55, 60, 65, 70, 80, 90, 100
- 2 Bearing Bar Thickness (mm) -2, 2.5, 3, 3.5, 4, 4.5, 5, 6, 7, 8, 9, 10
- 3 Bearing Bar Type - Plain, Serrated
- 4 Twisted Square Cross Bar Diameter (mm) - 5, 6, 8
- 5 Bearing Bar Pitch (mm) - 25, 30, 33, 34, 35, 40, 41, 50
- 6 Cross Bar Pitch (mm) -20, 25, 38, 50, 76, 100
- 7 Finish - Self Colour, Hot Dip Galvanized, Painted



MATERIAL WIDTH TO BE 1220 mm. -MATERIAL THICKNESS : 0.80 to 1.50mm. -STEEL SHEET: GI OF YIELD STRNGTH 450MPa.



## SHFloor© Floor Decking System Design and Technical Information

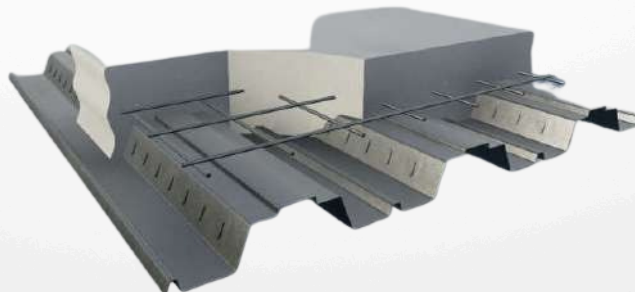
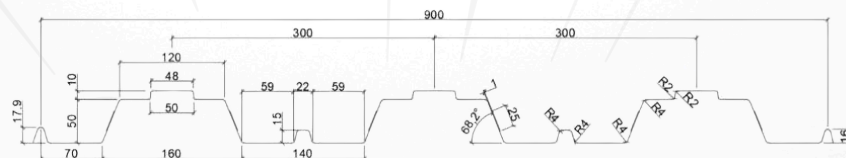
SHFloor© SH 60/300 trapezoidal profile is applicable for floor deck applications used for mezzanine floor system, and is commonly known as a Composite Deck.

### SH-60/300 - Material and Product Specifications

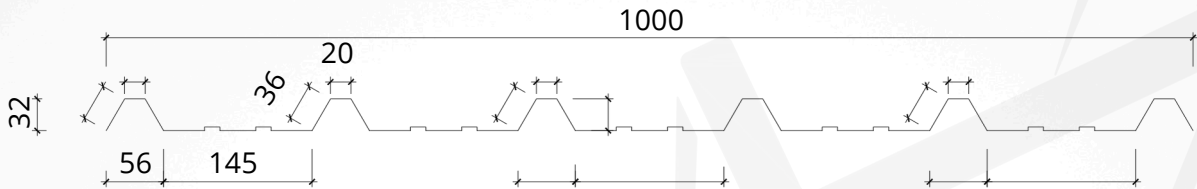
Usage Material	Floor Deck G.I (Galvanized Steel as per ASTM A653M SS		
Type Material	Grade 50) 0.9mm - 1.2mm - 1.5mm		
Thickness			
Dimensions (mm)	Covering Width: 900mm		Profile Pitch: 300mm
	Crown: 120mm Valley: 140mm		Profile Depth: 60mm
			Rib Width: 160mm
Colors	Standard RAL Colors or Special Colors on Request		
Coating/Finish	G90 (275 grams/m2 Zinc Coating) Mill Finish		

### DIMENSIONS & SECTION PROPERTIES (PER METER WIDTH):

Thickness (mm)	Cover Width (mm)	Nominal Weight (kg/m <sup>2</sup> )	Area (cm <sup>2</sup> )	Full Sec. Ix (cm <sup>4</sup> )	Elastic Modulus E (kN/cm <sup>2</sup> )	Top in Compression				Bottom in Compression			
						Ixeb (cm <sup>4</sup> )	Sx-Top (cm <sup>3</sup> )	Sx-Bot (cm <sup>3</sup> )	Ma bx (kNm)	Ixeb (cm <sup>4</sup> )	Sx-Top (cm <sup>3</sup> )	Sx-Bot (cm <sup>3</sup> )	
0.9	900	9.58	12.49	67.15	20300	64.39	18.03	25.59	3.72	58.2	18.23	20.08	
1.20	900	12.77	16.64	90.22	20300	90.22	25.46	34.45	5.25	85.79	25.00	31.43	
1.50	900	15.97	20.81	112.78	20300	112.78	31.83	43.06	6.56	107.24	31.25	39.29	

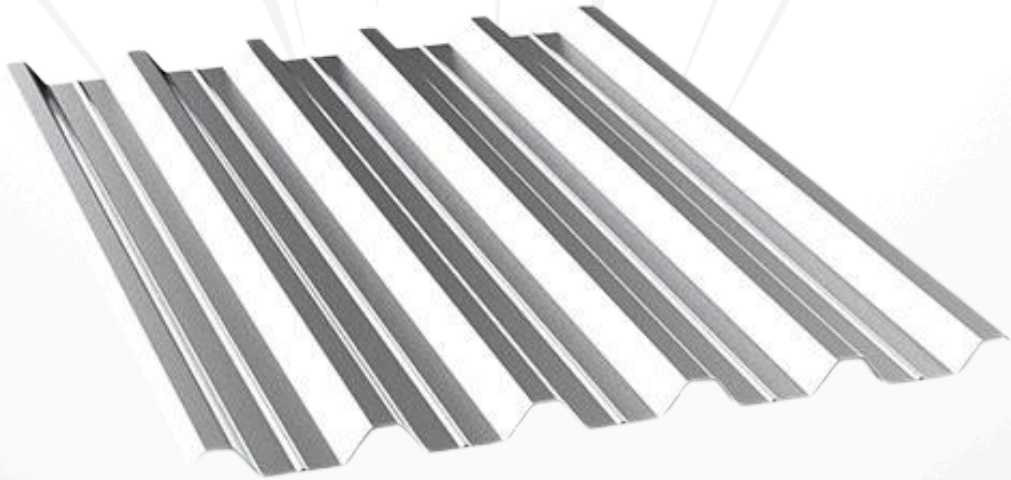






## CORRUGATED SHEET

Induction pipe bending is a high precision controlled bending Pipes and forms under local heating using high frequency Electric power . Pipe heating machine through The coils are made of copper while the tubes are mechanically driven Through the water cooled induction loop. Pipes driven at constant speed Through the hydraulic system monitor and control all bending The parameter is to ensure that the diversified high quality requirements are met



## Roll Formed - Z Purlins

### Applications

Secondary support & Girts

### Specification

\* Hot Dip galvanized steel thickness 1.5 to 3.0 mm roll formed purlin conforming to ASTM 653 grade "D" (ss 340) zinc coated to G 90 (275 gm/m<sup>2</sup>)



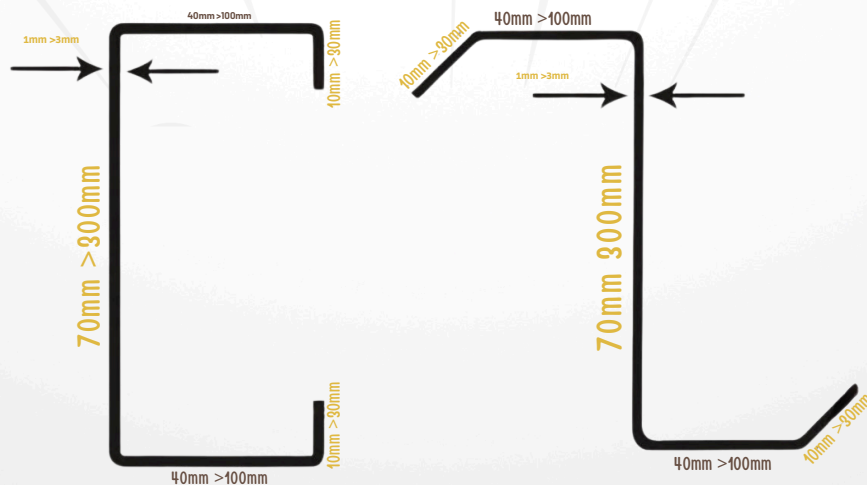
Z PURLINS



C PURLINS



- Black steel thickness 1mm-3mm
- Galvanize steel thickness 1mm-3mm
- Length up to 15 M.L
- Holes as per request for all aspects





## CAPABILITIES

size of pipe: 4inch-  
36 inch bending  
radius: 2.5DR-6  
Meter thikness:  
3.91mm-50mm

Induction pipe bending is a high precision controlled bending Pipes and forms under local heating using high frequency Electric power. pipe heating machine through The coils are made of copper while the tubes are mechanically driven Through the water cooled induction loop. Pipes driven at constant speed . Through the hydraulic system monitor and control all bending The parameter is to ensure that the diversified high quality requirements are met.



Power: 10Kw

Metal Sheets:-

Material: Steel & Aluminium

Maximum sheet size: 2000x6000mm

Cut depth: 1mm - 30mm

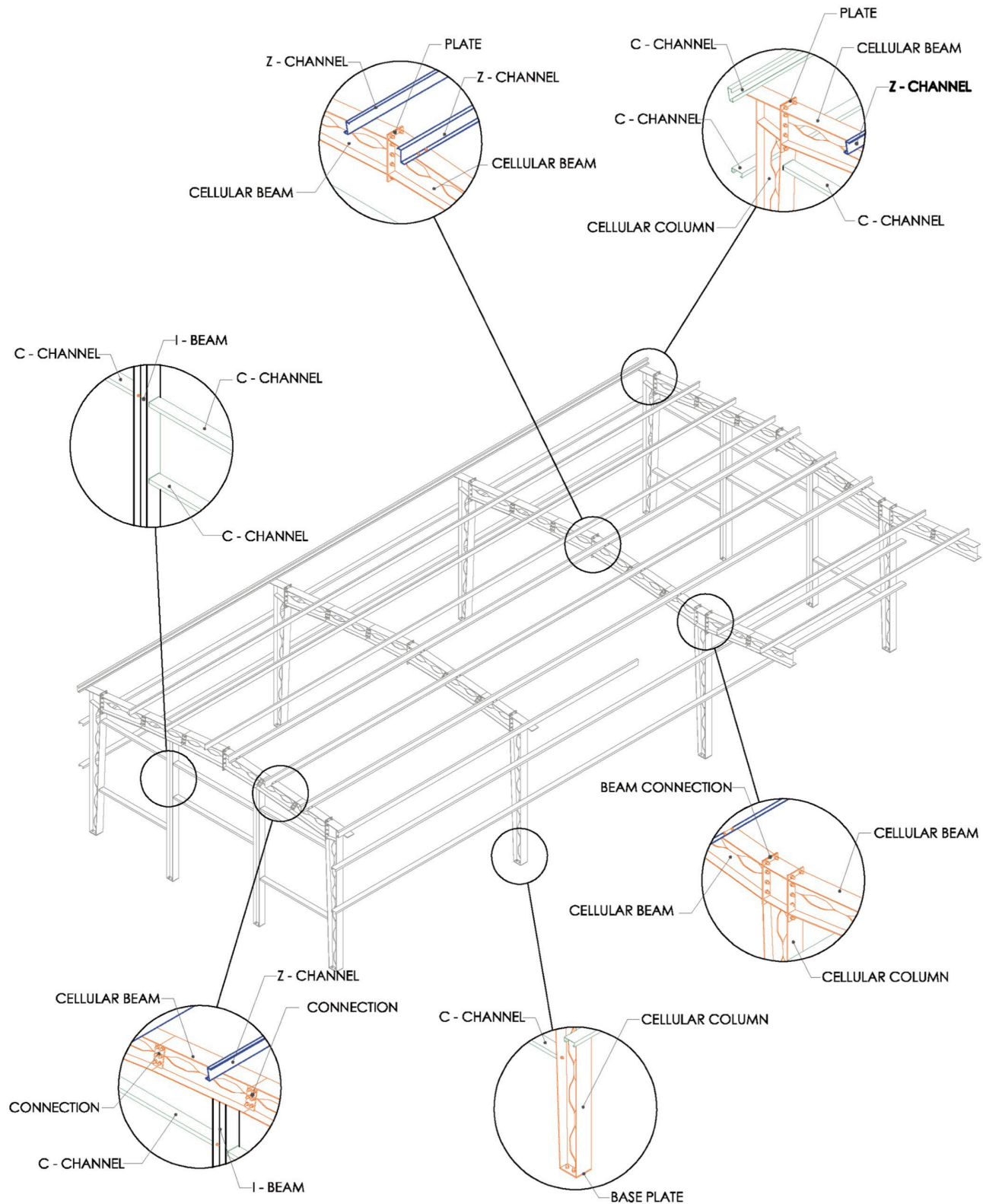
Pipes:-

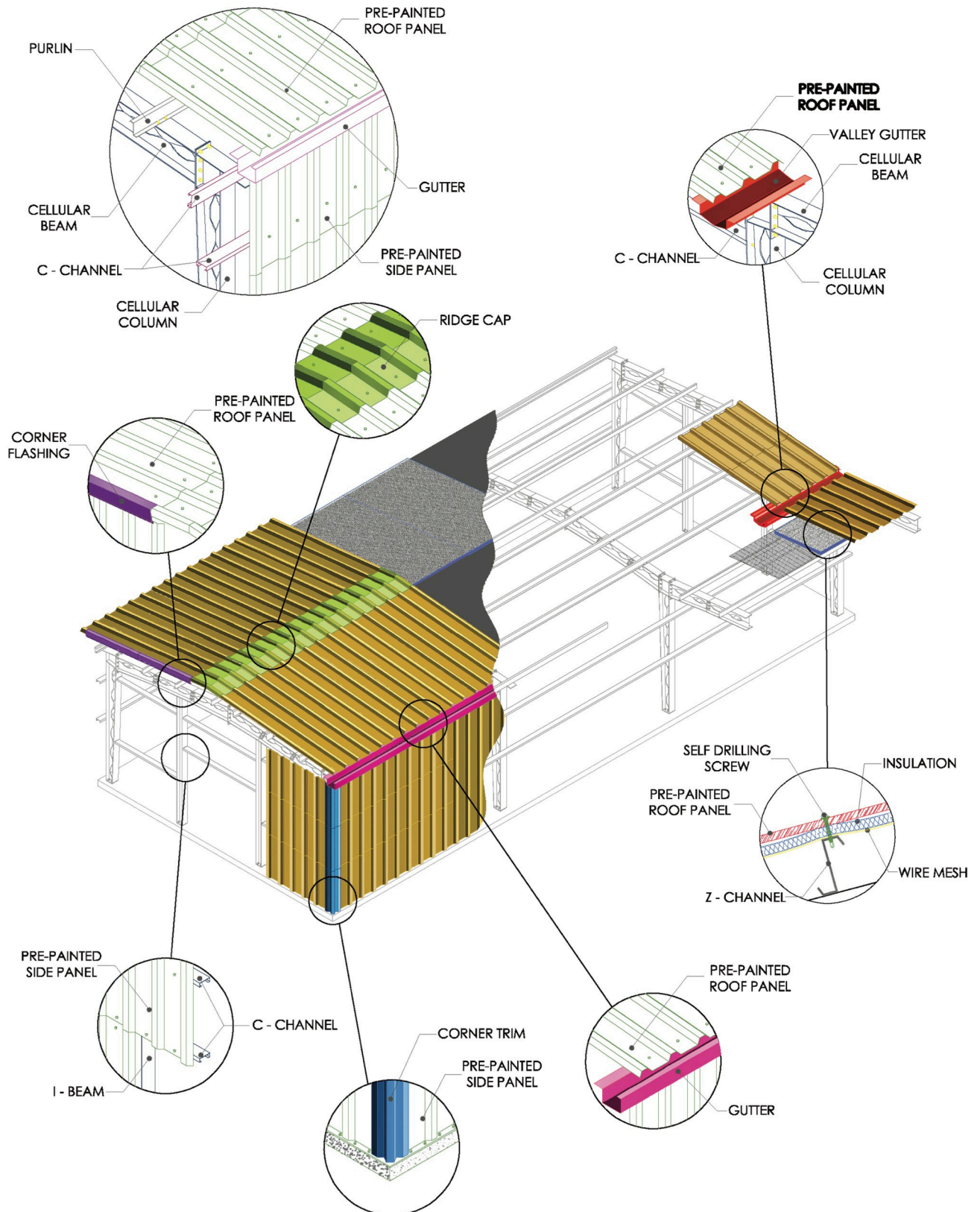
Size Range: 1" - 5"

Size Range: 33.4mm - 150mm

Cute Depth: 1mm - 6mm









## Basic Data

### TYPES OF PERFORATION

Rv round holes staggered pitch  
 Rg round holes square pitch  
 Rpv round holes deep staggered pitch  
 Rpg round holes deep square pitch  
 Qg square holes square pitch  
 Qv square holes staggered pitch  
 Lv slot holes staggered pitch  
 Lg slot holes square pitch  
 Ss decorative holes

### METAL COIL

Width: 1000 mm / 1250 mm / 1500 mm  
 Length: up to a weight of 5 tonnes

### REGULAR STOCK ITEMS

We offer more than 600 types of perforated metal sheets in the distribution warehouses in Chrudim (Bohemia) and Prostějov (Moravia). You can find examples of regular stock items on page 7.

### OTHER PROCESSING

In co-operation, we are able to provide of material processing or surface treatment  
 - Hot deep galvanising  
 - Electro-galvanising  
 - Powder coating  
 - Painting

Eloxal coating, etc.

### DELIVERY SERVICE

Goods are available in our distribution warehouses in Chrudim or Prostějov. Thanks to our own delivery service, we are able to transport your order within hours anywhere in the Czech Republic.

### SHEET METAL THICKNESS

Mild steel: max 12 mm  
 Stainless steel: max 8 mm  
 Non-ferrous metals e. g. aluminium, copper, brass and other materials such as PVC, cardboard, paper can be perforated after testing on a sample.

### CUSTOM-MADE ORDERS

We are able to produce a wide range of perforated products. We recommend you send a drawing or design. You can find examples of production possibilities on pages: 8, 9 and 10.

### FORMULAS

### AND CALCULATIONS

You can find simple calculation instructions for free perforation areas in the table on page 6.

Try our on-line calculator [www.perfolinea](http://www.perfolinea)

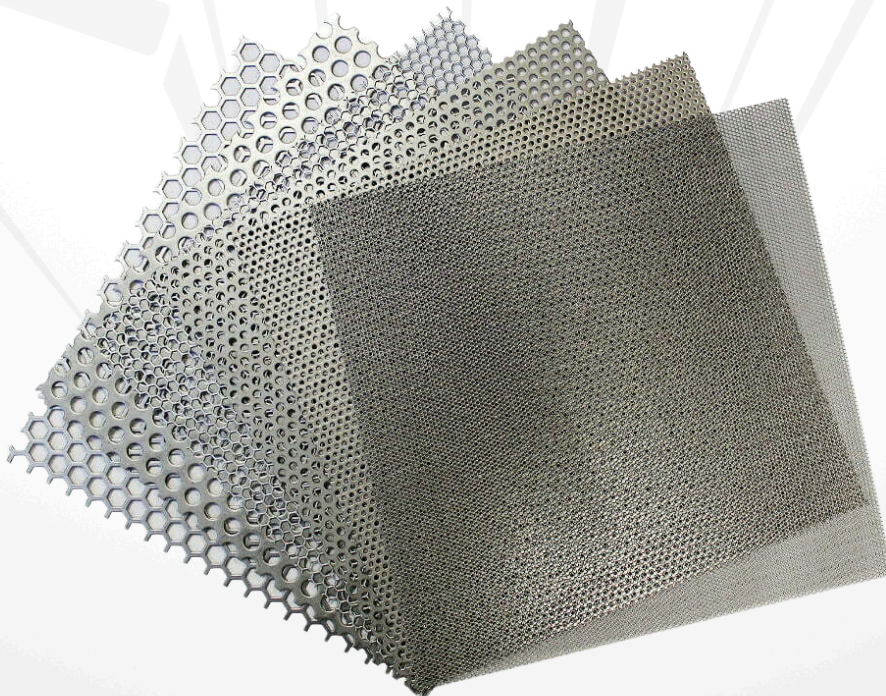
### METAL SHEET FORMAT

Small format: 1000 x 2000 mm (w x l)  
 Medium format: 1250 x 2500 mm (w x l)  
 Large format: 1500 x 3000 mm (w x l)

It is possible to modify the size of the format according to your wishes or drawing sent to us.

### PRODUCTION METHODS

Press cutting, laser-cutting, cutting, bending and flattening  
 You can find examples of production possibilities on pages 8, 9 and 10.

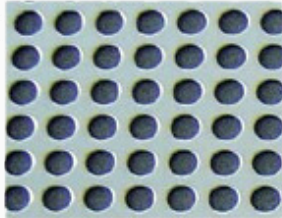




## Perforation Examples

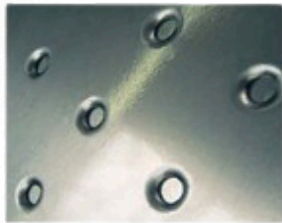
### PER FORATED METAL SHEET

Rg round holes square pitch



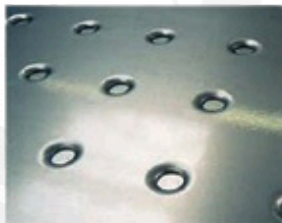
$\phi = 4 \text{ mm}$

Rpv-round holes deep staggered pitch



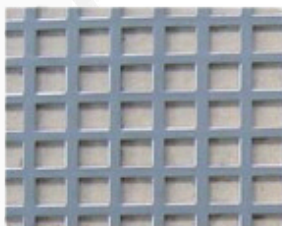
$\phi = 4 \text{ mm}$

Rpg round holes deep square pitch



$\phi = 4 \text{ mm}$

Qg square holes square pitch



hole  $5 \times 5 \text{ mm}$

Qv-square holes staggered pitch



hole  $5 \times 5 \text{ mm}$

Lv-slot holes staggered pitch



hole  $1 \times 20 \text{ mm}$

Lg slot holes square pitch



hole... mm

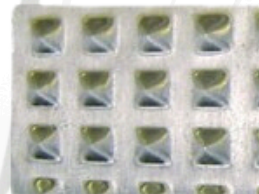
Ss decorative holes



Structured slot



Flower



Pyramid

Rv round holes staggered pitch



$\phi = 1,0 \text{ mm}$

Shot blasting directs a high speed stream of abrasive particles at metal, to clean, roughen or polish the surface

We guarantee that SA2.5 will be achieved. The maximum size that can be operated is 700mm\*700mm\*13m. And we provide flexibility in product types, shapes and sizes.



الرمز الإلكتروني  
الموحد



المركز السعودي للأعمال  
Saudi Business Center



## امسح الرمز الإلكتروني الموحد

و أطلع على وثيقة بيانات  
المنشأة المحدثة



450814966086

Business.sa 199080 +966 11 282 2881

@bcgov\_sa

@bcgovsa

للاستفسار





رؤية  
2030  
المملكة العربية السعودية  
KINGDOM OF SAUDI ARABIA



المركز السعودي للأعمال  
Saudi Business Center



وزارة التجارة  
Ministry of Commerce

**السادة / شركة العرو التجارية شخص واحد**

نسأل الله أن يكتب لكم التوفيق والنجاح في عملكم التجاري وأن تكونوا شريكاً في تعزيز اقتصاد المملكة العربية السعودية.

**يسرنا إبلاغكم بأن رقم منشأتكم الموحد هو**

٧٠٢٥٥٨٧٧٨٦

وقد تم ربطه بالخدمات الحكومية التالية..

<div style="background-color: #004d40; color: white; padding: 5px; display: inline-block;">٦٤٤٦١٤٢٤٧</div> رقم منشأتكم	<div style="background-color: #004d40; color: white; padding: 5px; display: inline-block;">١٠١٠٩٤٣٩٦٣</div> رقم منشأتكم
 <p>المؤسسة العامة للتأمينات الاجتماعية General Organization for Social Insurance</p>	 <p>وزارة التجارة Ministry of Commerce</p>
<div style="background-color: #004d40; color: white; padding: 5px; display: inline-block;">٨٦٨٣٦٥</div> رقم منشأتكم	<div style="background-color: #004d40; color: white; padding: 5px; display: inline-block;">٣٨٦٨١٥٣</div> رقم منشأتكم
 <p>الاتحاد العام للغرف التجارية Federation of Saudi Chambers</p>	 <p>الوزارة العامة للتخطيط Ministry of Economic and Planning</p>
<div style="background-color: #004d40; color: white; padding: 5px; display: inline-block;">لا يوجد</div> رقم منشأتكم	<div style="background-color: #004d40; color: white; padding: 5px; display: inline-block;">٣١٠٣٦٠٥٧٣٨٠</div> رقم منشأتكم
 <p>بلدي balady</p>	 <p>سبل</p>
	<div style="background-color: #004d40; color: white; padding: 5px; display: inline-block;">٣١١٨٩١٣٦١</div> رقم منشأتكم
	 <p>هيئة الزكاة والضريبة والجمارك Zakat, Tax and Customs Authority</p>

**للاستفادة من الخدمات المقدمة من الجهات الحكومية**



**دليل التاجر**





MCgovSA  
mc.gov.sa





شركة الشهباء للإنشاءات المحدودة  
AL - Shahba for construction co.Ltd



✉ Ceo@alabuo.com  
☎ +966 50 333 3362



- Multi-use bridges
- Silos for wheat, flour and fodder
- Fences and temporary buildings
- Industrial complexes
- Multi-storey buildings
- Huge billboards

شركة المشغولات والمباني المعدنية المحدودة  
Steel Building & Structure Co. Ltd. سبسكو  
SBSCO

✉ Hussain@alabuo.com  
☎ +966 53 333 8770



- Industrial metal structures
- Ceilings space frame
- Multi-storey metal structures



✉ Taco@alabuo.co  
☎ +966 50 627 2671



- Different sizes of umbrellas
- Innovative Tents and Canopies
- solar energy



# حديد العبو ALABUO STEEL

## Sales



**+966 11 269 0999**



**[sales@alabuo.co](mailto:sales@alabuo.co)**



**[www.alabuo.co](http://www.alabuo.co)**



## General Administration



**+966 56 333 3362**



**[alabuo@alabuo.co](mailto:alabuo@alabuo.co)**



**[www.alabuo.co](http://www.alabuo.co)**



alabuo.com

**alabuo**  
مجموعة العبو الصناعية  
alabuo industrial group

أكافي الصناعي  
**AKAFI.NET**

**ALABUO**  
TRADING CO.  
شركة العبو التجارية



شركة المشغولات والمباني المعدنية المحدودة  
Steel Building & Structure Co. Ltd.



شركة الشهباء للإنشاءات المحدودة  
AL - Shahba for construction co.Ltd

الحل الشرقي

**ALABUO**  
STEEL



شركة الخيام والمظلات المحدودة  
Tents and Awnings Company Limited



مصنع الشهباء للصناعات الحديدية  
AL - Shahba Steel Industries Factory